

**Ultrasound Images of Mature Spring Chinook from Leavenworth National Fish Hatchery
June 27, 2007**

All images taken with a portable Honda HS-101V

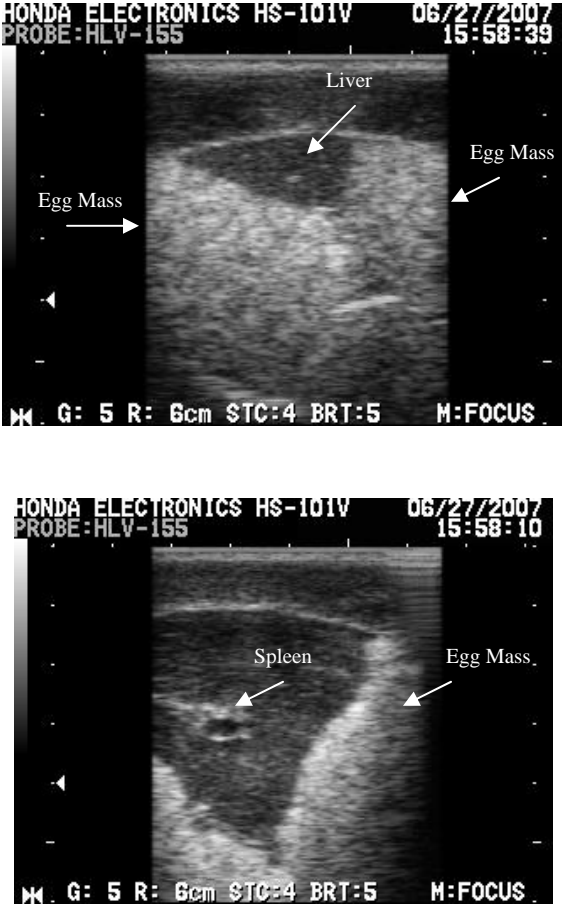


Figure 1. Cross-sectional ultrasound images of maturing female spring chinook late in the maturation process. The liver is clearly visible as a dark, hypoechoic mass and the reflective (hyperechoic) ovaries are evident below. The tip of the spleen can be seen the middle of the lower image (surround by the liver).

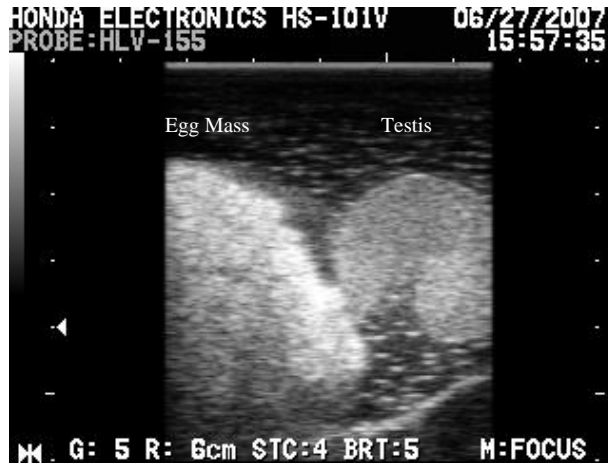


Figure 2. Cross-sectional ultrasound image of an ovary (left) and testis (right) removed from the body cavity of spring chinook late in the maturation process. The ovaries have a much more erratic, uneven border due to egg clusters, while the testis is slight more hypoechoic (dark) with a smooth, rounded border/edge. The large fold in the testis is also evident.



Figure 3. Longitudinal ultrasound image of an individual testis removed from the body cavity of a spring chinook late in the maturation process. When viewed from this orientation, the testis appears more hypoechoic (dark) but still contains a smooth and rounded border.

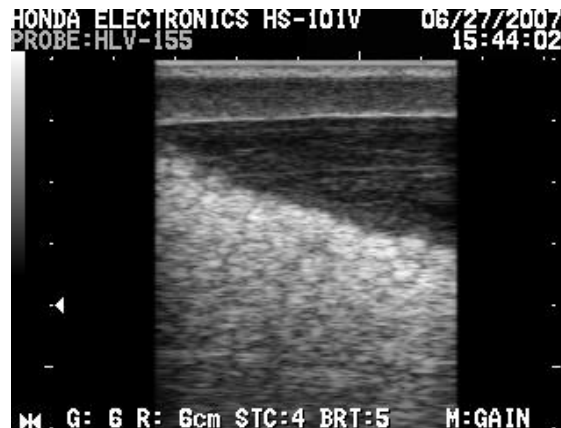


Figure 4. Ultrasound image of an individual ovary from a spring chinook late in the maturation process. The individual egg clusters and uneven/erratic border of the ovary is clearly evident.