

# HS-2100V

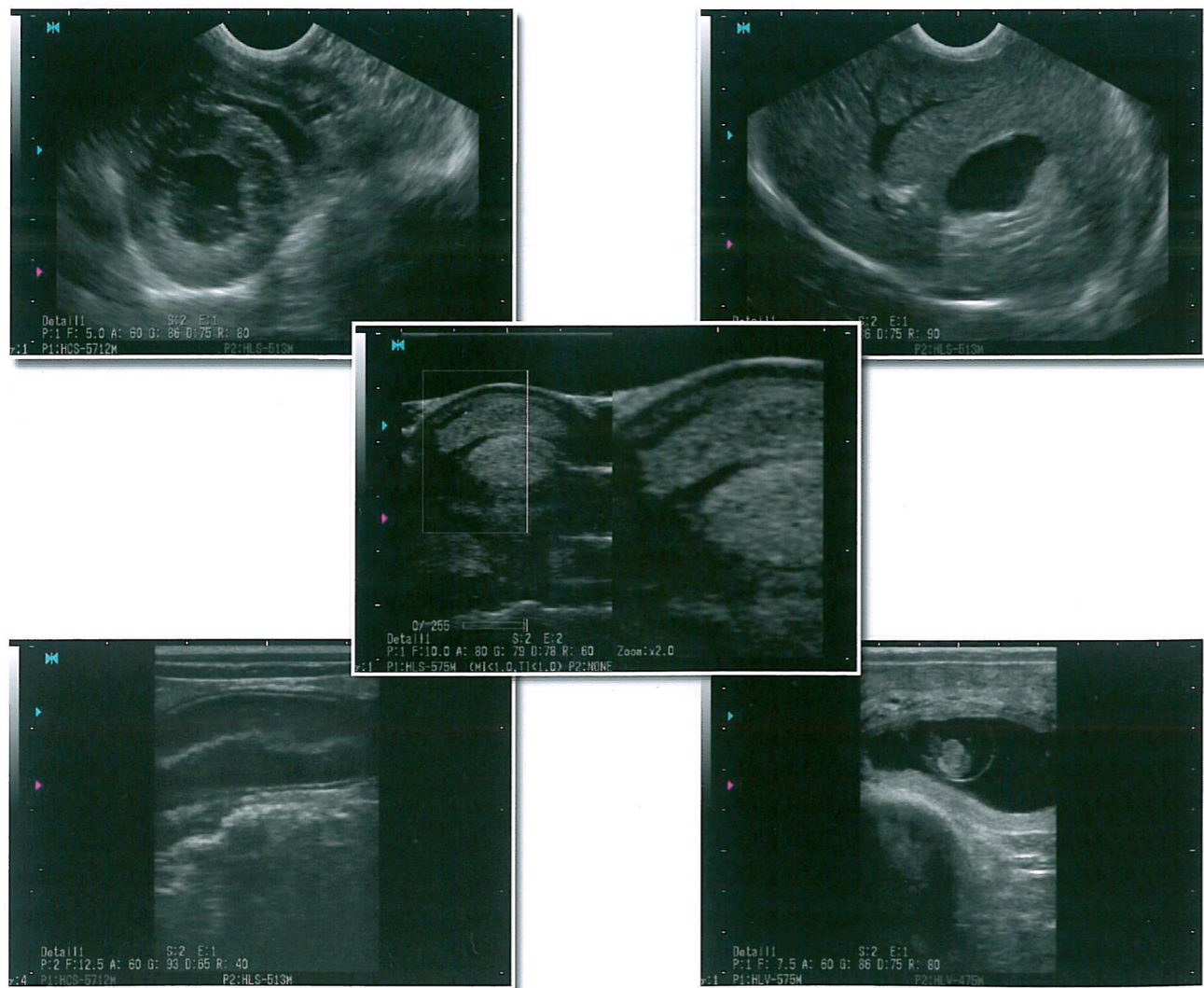


for the Small-, Large-and Mixed animal practice  
- Advanced technology and excellent image quality embodied in a stylish unit -

HS-2100V is a portable, High-Resolution, black and white ultrasound imaging system incorporating the latest technologies available into an economical, user-friendly package. High Density, Multi-Frequency Transducers provide excellent image quality in rugged field conditions or at the office. Moving Image (Clip) Storage and Split Screen Zoom Search allow easier image review and improve diagnostic efficiencies.

Multi-Frequency Imaging allows more procedures to be performed with each transducer. This increases user efficiency and lowers overall equipment cost. Legendary Honda Electronics reliability and quality also contribute to a lower lifetime equipment operating cost.

Honda HS-2100V Portable Linear/Convex Ultrasound System, the NEW standard for Image Quality and User Efficiency in all Large, Small and Mixed Animal Veterinary Ultrasound procedures.



## WIDE RANGE OF PROBES FOR ALL VETERINARY APPLICATIONS.

### Linear

**HLV-475M**  
5.0-7.5-10.0 MHz

Small Animal:  
abdominal/reproduction  
Large Animal:  
reproduction/tendon/  
pleural fluid/MSK  
Exotic Animal:  
specialty



**HLS-513M**  
**HLS-413**  
7.5-10.0-12.5 MHz

Small Animal:  
superficial/abdominal/reproduction  
Large Animal:  
tendon/MSK  
Exotic Animal:  
specialty



**HLS-575M**  
**HLS-475M**  
5.0-7.5-10.0 MHz

Small Animal:  
superficial/abdominal/reproduction  
Large Animal:  
tendon/MSK  
Exotic Animal:  
specialty



### special order probes

**HLV-4212M**  
1.5-2.0-3.0 MHz

Large Animal (swine, sheep, goat, alpaca/llama):  
Meat Science



### Convex

**HCS-4710M**  
5.0-7.5-9.0 MHz

Small Animal:  
abdominal/cardiac/reproduction  
Large Animal:  
specialty tendon/MSK  
Exotic Animal:  
specialty



**HCS-5712M**  
5.0-7.5-9.0 MHz

Small Animal:  
abdominal/cardiac/reproduction  
Large Animal:  
specialty tendon/MSK  
Exotic Animal:  
specialty



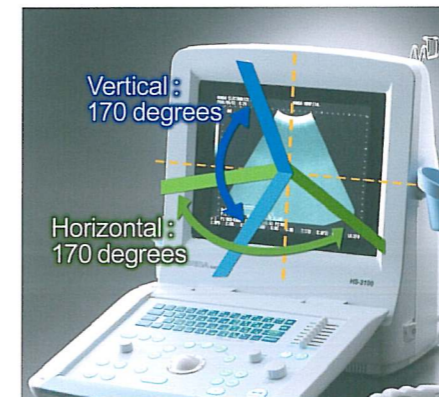
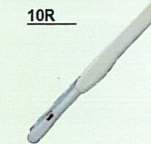
**HCS-452M**  
3.5-5.0-7.0 MHz

Small Animal:  
abdominal/cardiac/reproduction  
Large Animal (swine, sheep, goat, alpaca/llama):  
reproduction  
Exotic Animal:  
specialty



**HCV-4710MV**  
5.0-7.5-9.0 MHz

Internal Biopsy Guide,  
120 Deg Scan Angle:  
Large Animal:  
Ovum Pick-up



### Wide screen in compact body

The screen size is 10.4 inches and the footprint is very small. The unit can be transported anywhere.

Carefully chosen latest released LCD panel brings the widest range of gray shade, which eases the readability of the ultrasound image.

Wide viewing angle enables comfortable clinical observation.

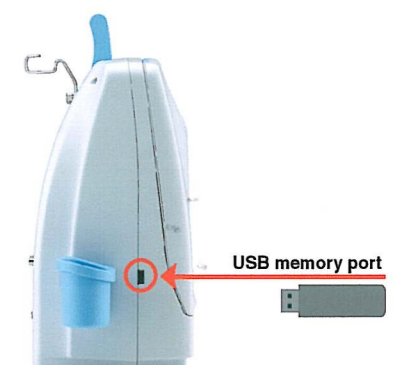
### USB memory port

USB port allows you to store still and moving image data and carry them to your own PC.

It gives very good portability for the scanned data.

Internal memory has capacity of 100 images (max.) and adding USB memory allows you unlimited capacity.

Standard USB flash memory can be used.



### Moving image storage

Cine memory data can be stored as moving picture data into a memory at USB port.

You can easily cut out the necessary scene from a maximum of 255 frames for better visibility and handling.

